



# Oral Potentially Malignant Disorders

## Oral Cancer

**A/Prof Omar Kujan**

**BDS DipOPath MSc MFDS RCPS PhD FRCPath**

---

- Oral potentially malignant disorders
  - Leukoplakia
  - Erythroplakia
  - Oral submucous fibrosis
  - Palatal lesions in reverse smokers
  - Actinic cheilitis
  - Lichen planus
  - Lupus erythematosus
- Oral cancer



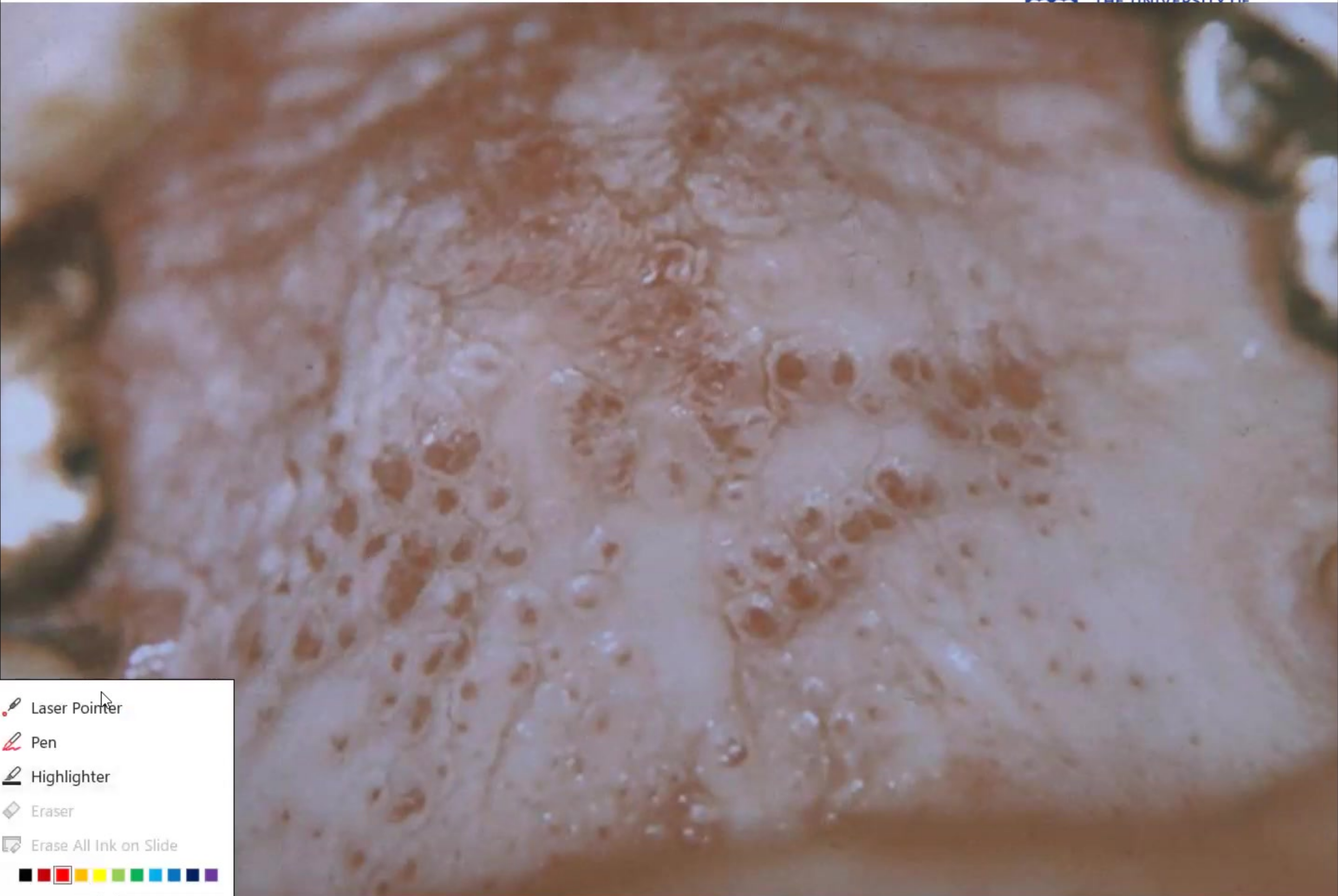
## Learning Outcomes






- Aetiology and pathogenesis
- Clinical features
- Histopathologic features
- Diagnosis
- Treatment


# Importance of Normal Anatomy and Histology to Diagnostication

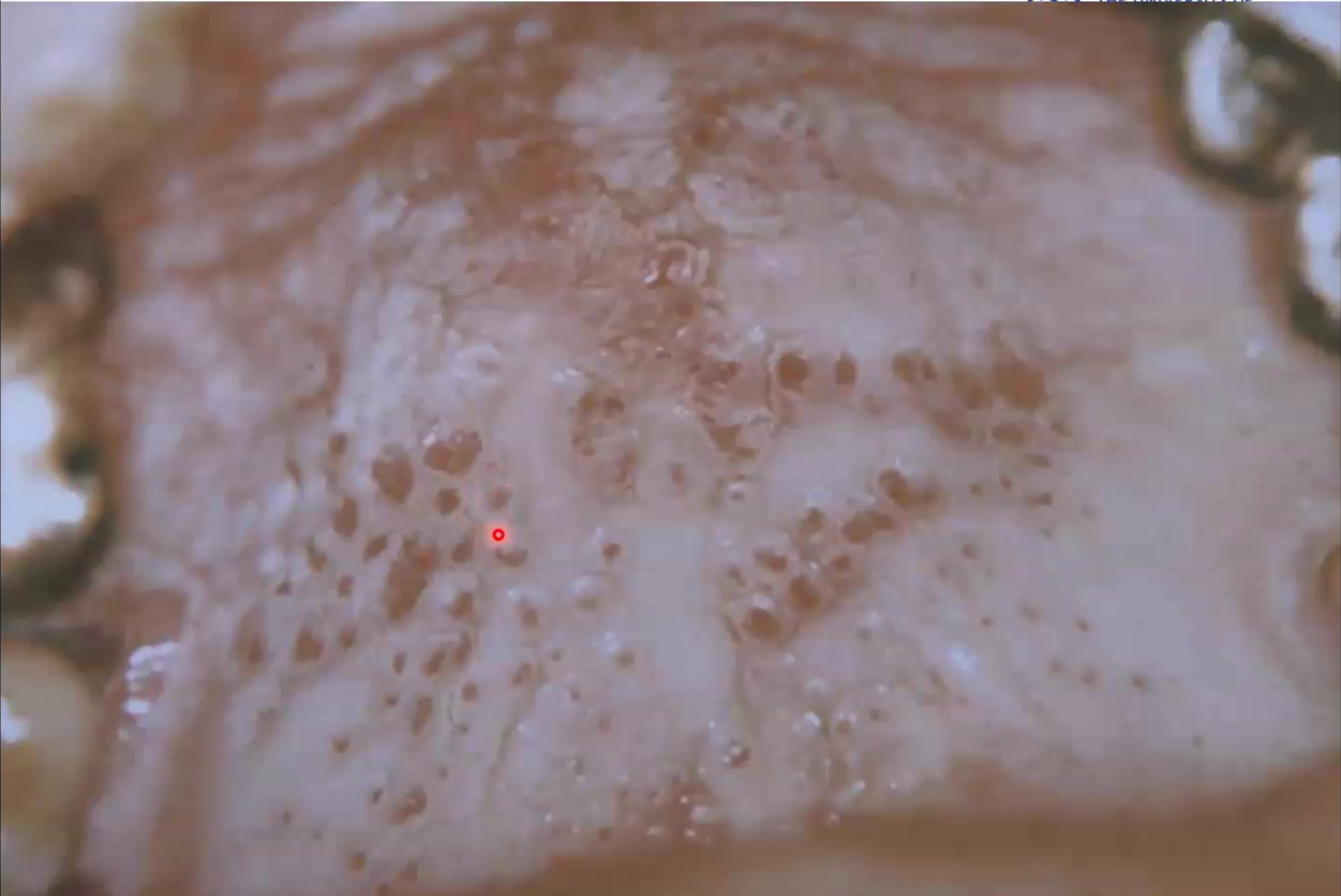
- To recognize changes of the normal tissues
- The clinical oral diagnostication must have a thorough and complete knowledge of the normal oral cavity and surrounding regions.

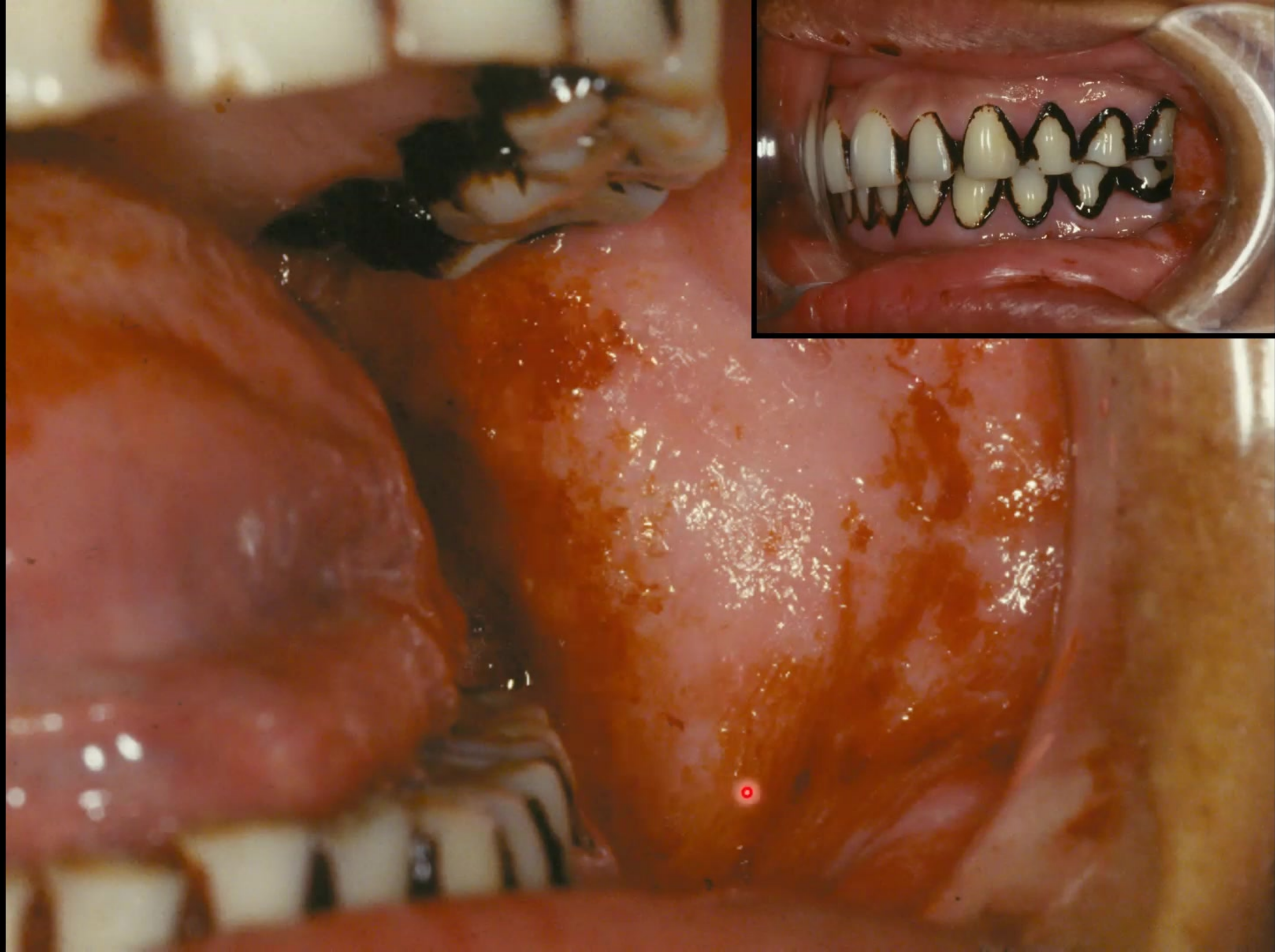
- In learning to make a differential diagnosis of soft tissue lesions, the first step is to recognize the presence of an abnormal change in **function, structure** or **appearance** during a clinical oral examination.



-  Laser Pointer
-  Pen
-  Highlighter
-  Eraser
-  Erase All Ink on Slide

Color palette: 



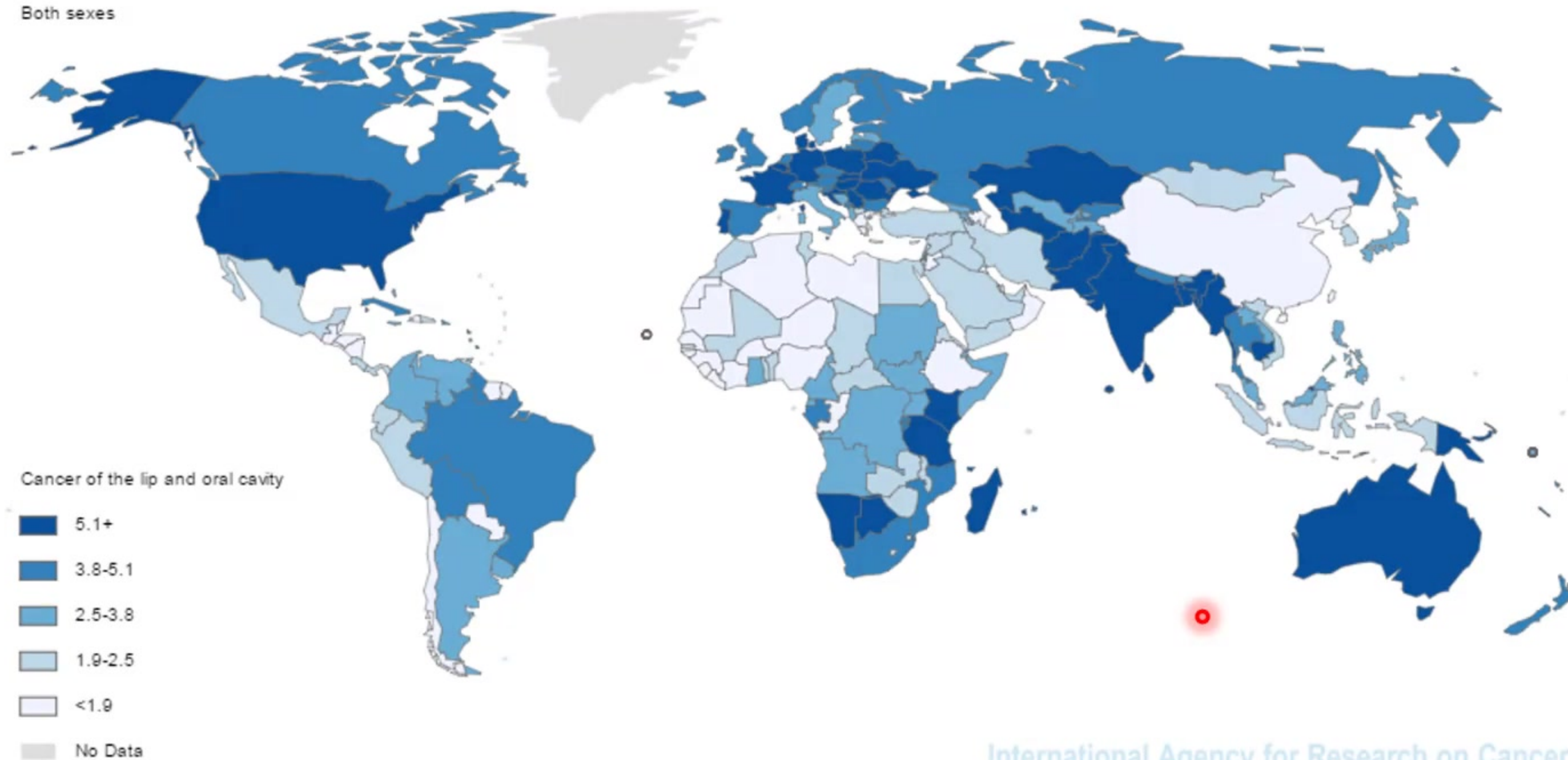




# Incidence

Incidence ASR

Both sexes



International Agency for Research on Cancer



Source: GLOBOCAN 2012 (IARC)

- In just India, over 100,000 cases of oral cancer are diagnosed annually, and the numbers are on the increase.
- France has the highest incidence rate of oropharyngeal cancer
- In Australia during the period from 1982 to 2008, an increased annual rate of 3.2% of the base of tongue cancers was observed

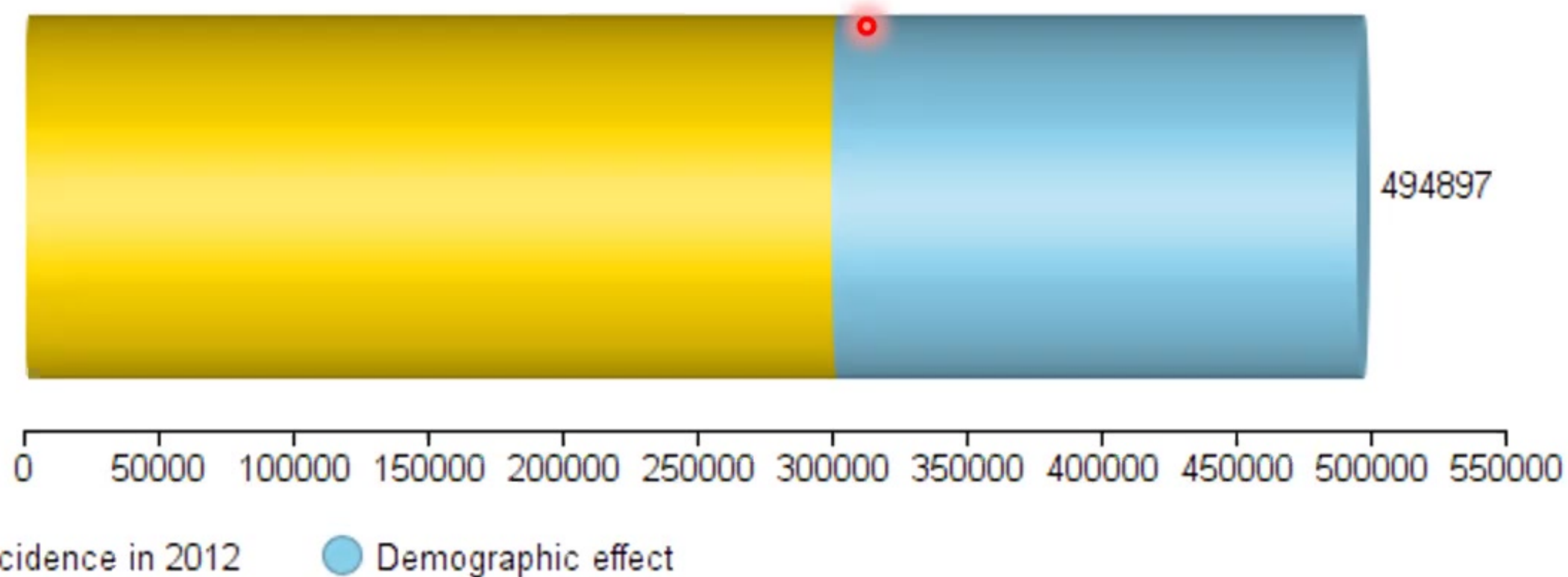
# Incidence Projection 2035

International Agency for Research on Cancer

World

Lip, oral cavity

Number of new cancers in 2035 (all ages) - Both sexes



# Incidence Projection 2035

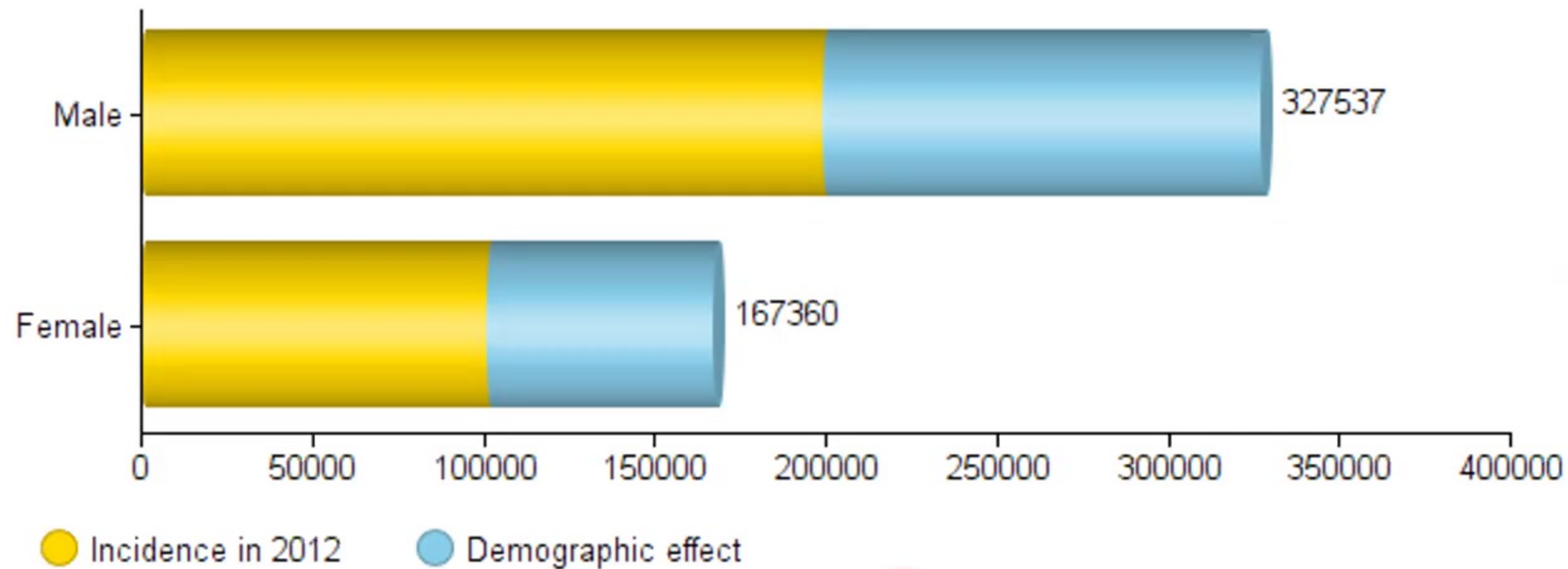
International Agency for Research on Cancer

World



Lip, oral cavity

Number of new cancers in 2035 (all ages)



● Incidence in 2012    ● Demographic effect

■ Incidence in 2012    ■ Demographic effect

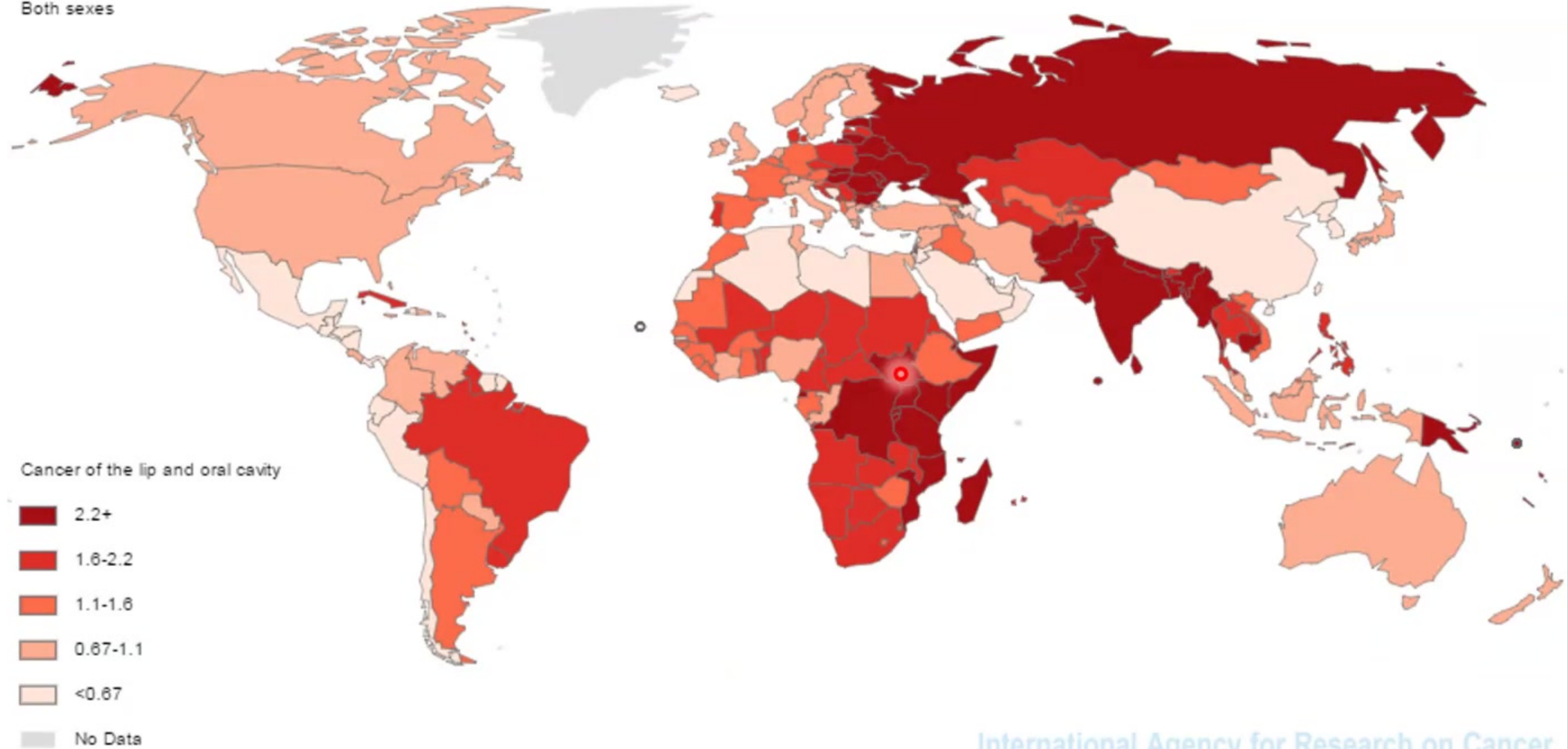
GLOBOCAN 2012 (IARC) (8.6.2016)

GLOBOCAN 2012 (IARC) (8.6.2016)

# Mortality

Mortality ASR

Both sexes



Source: GLOBOCAN 2012 (IARC)

International Agency for Research on Cancer



# Mortality Projection 2035

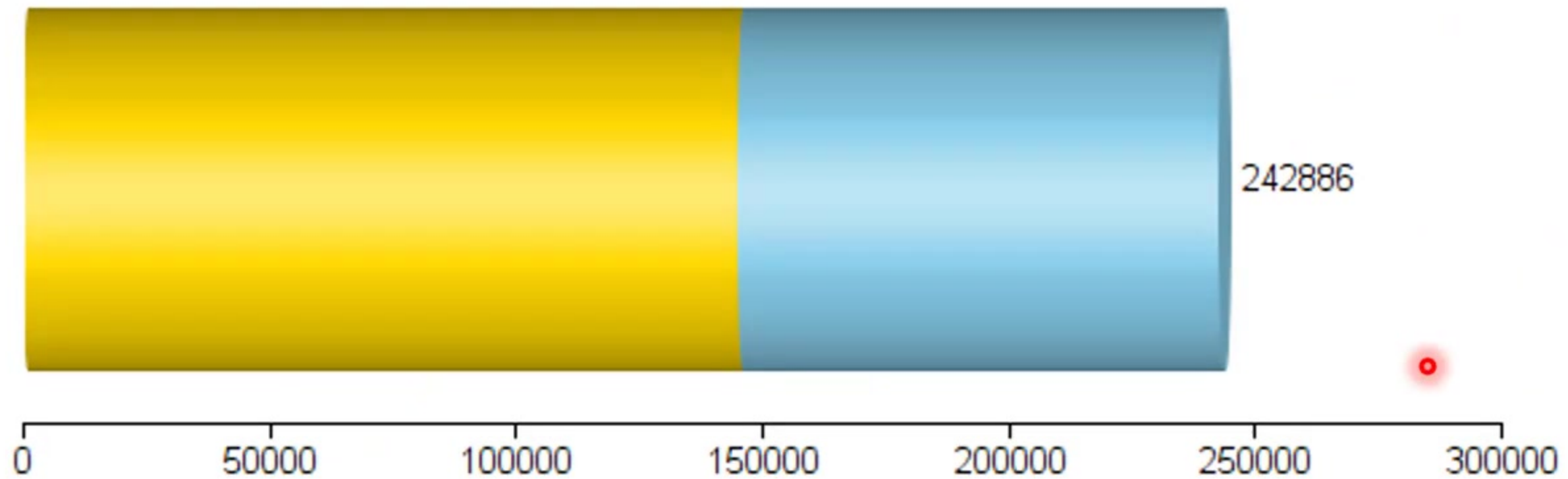
International Agency for Research on Cancer

World



Lip, oral cavity

Number of cancer deaths in 2035 (all ages) - Both sexes



● Mortality in 2012    ● Demographic effect

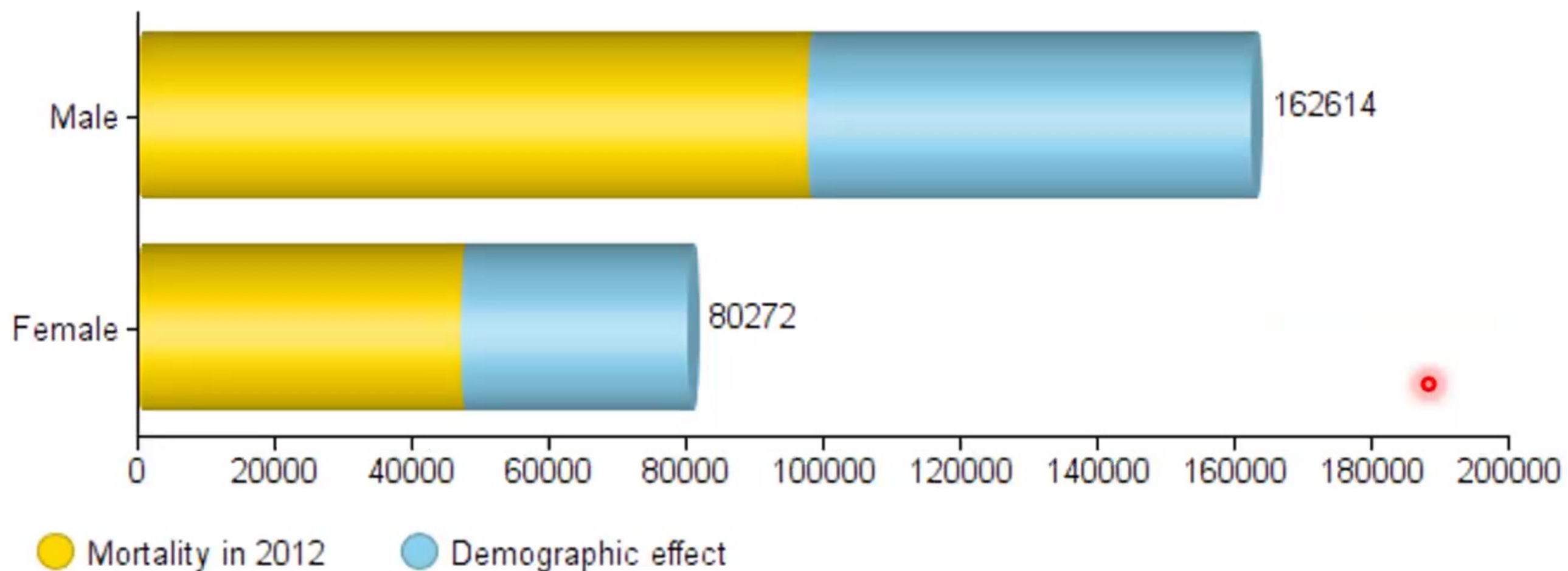
# Mortality Projection 2035

International Agency for Research on Cancer

World

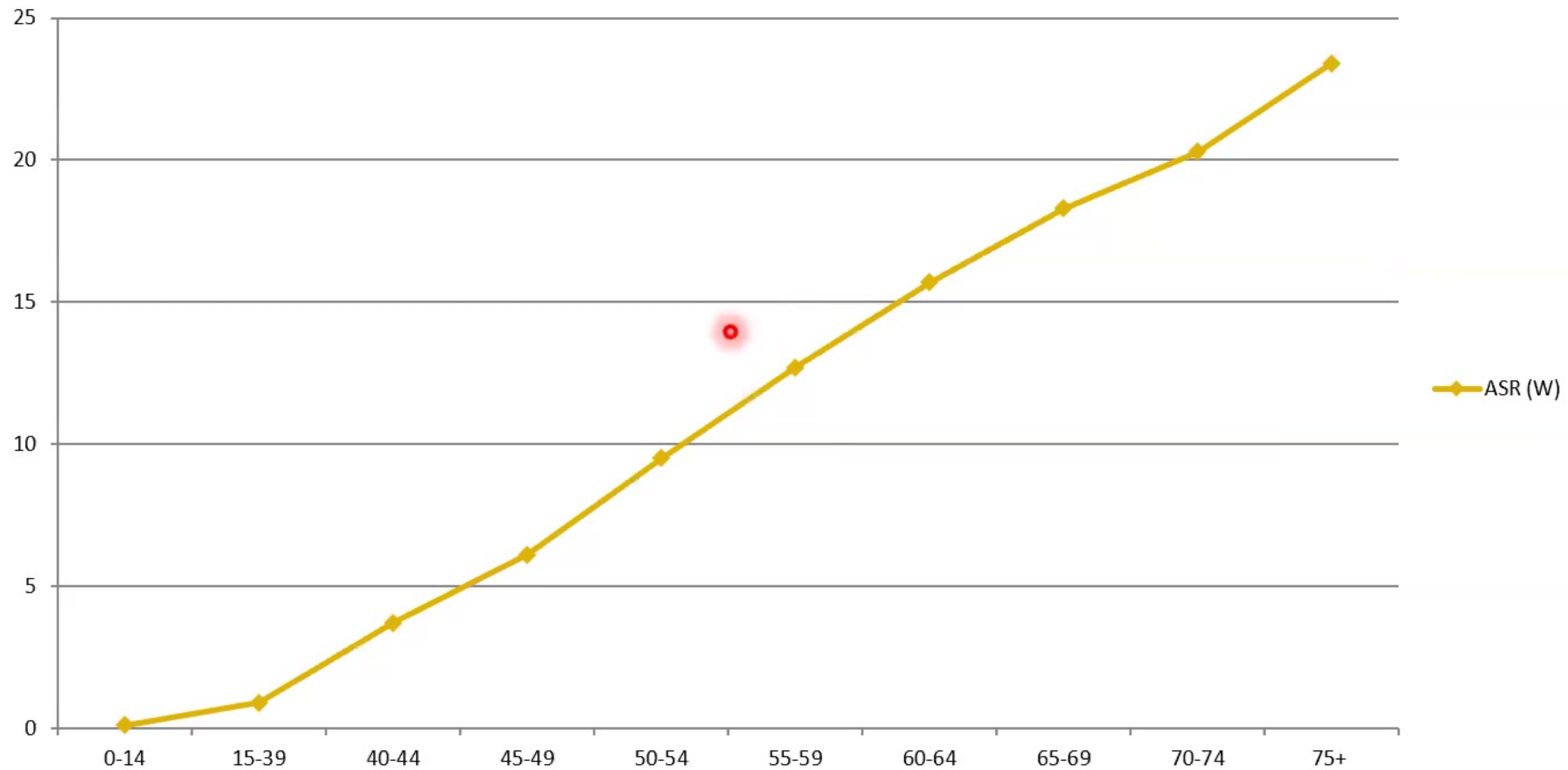
Lip, oral cavity

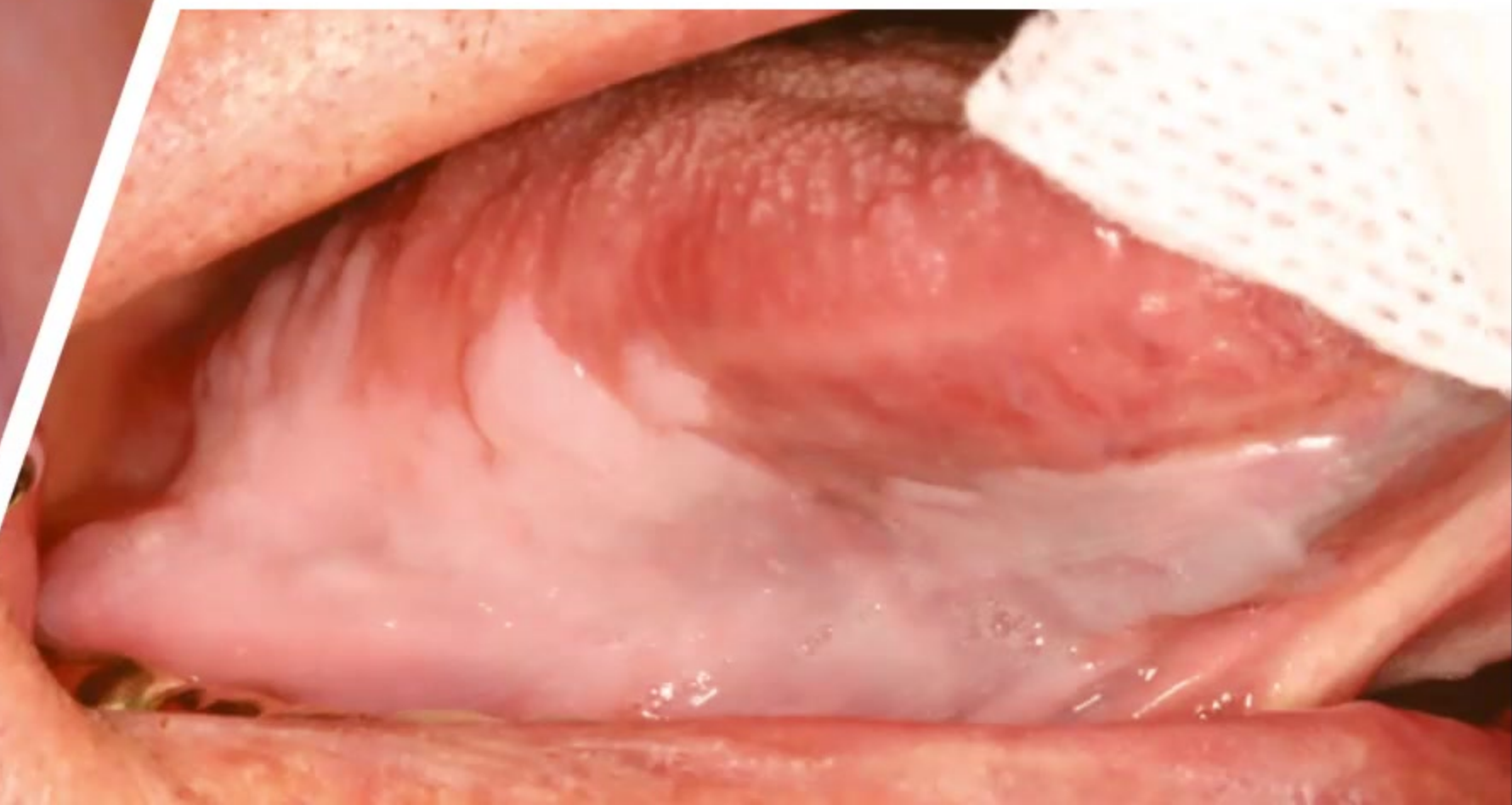
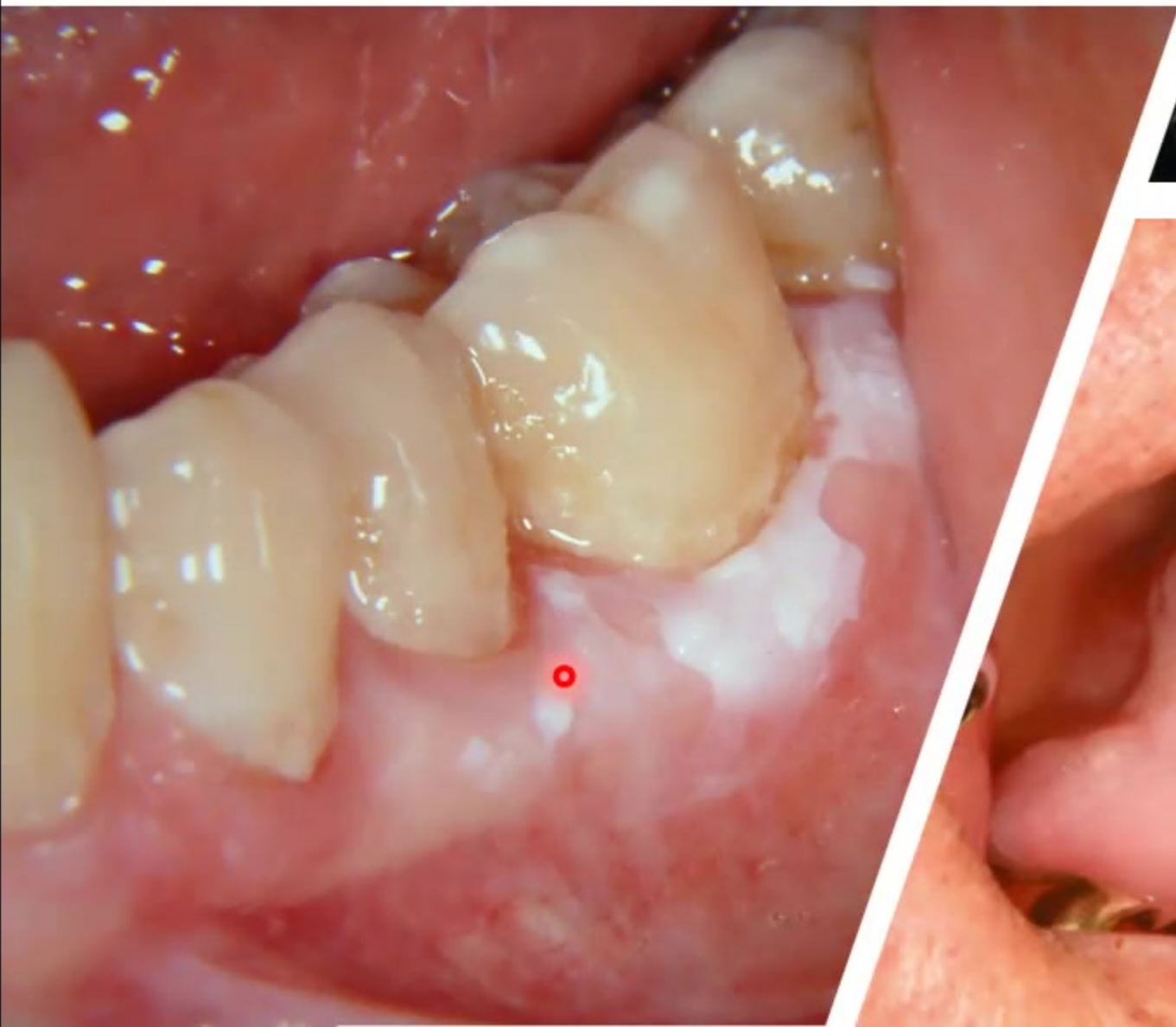
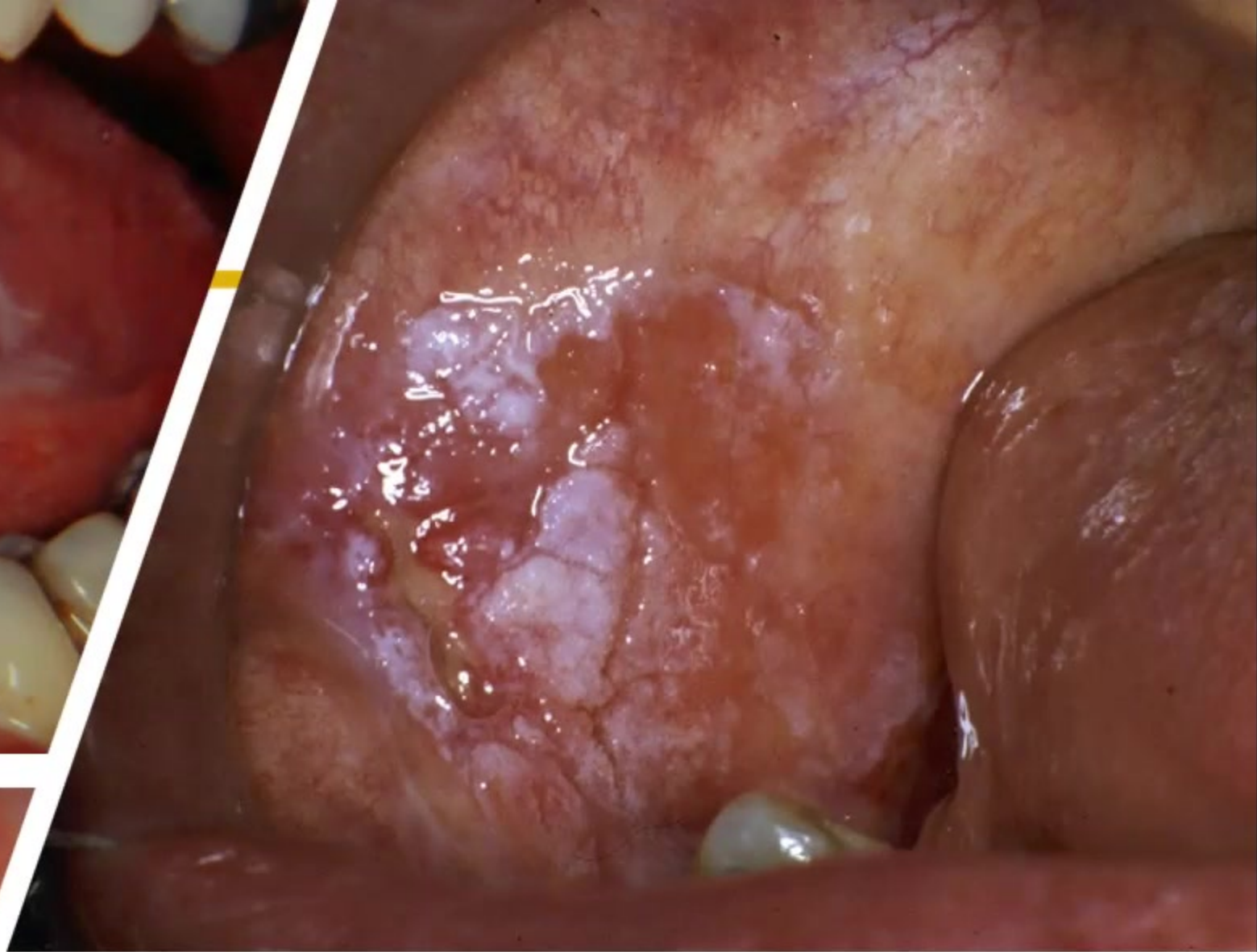
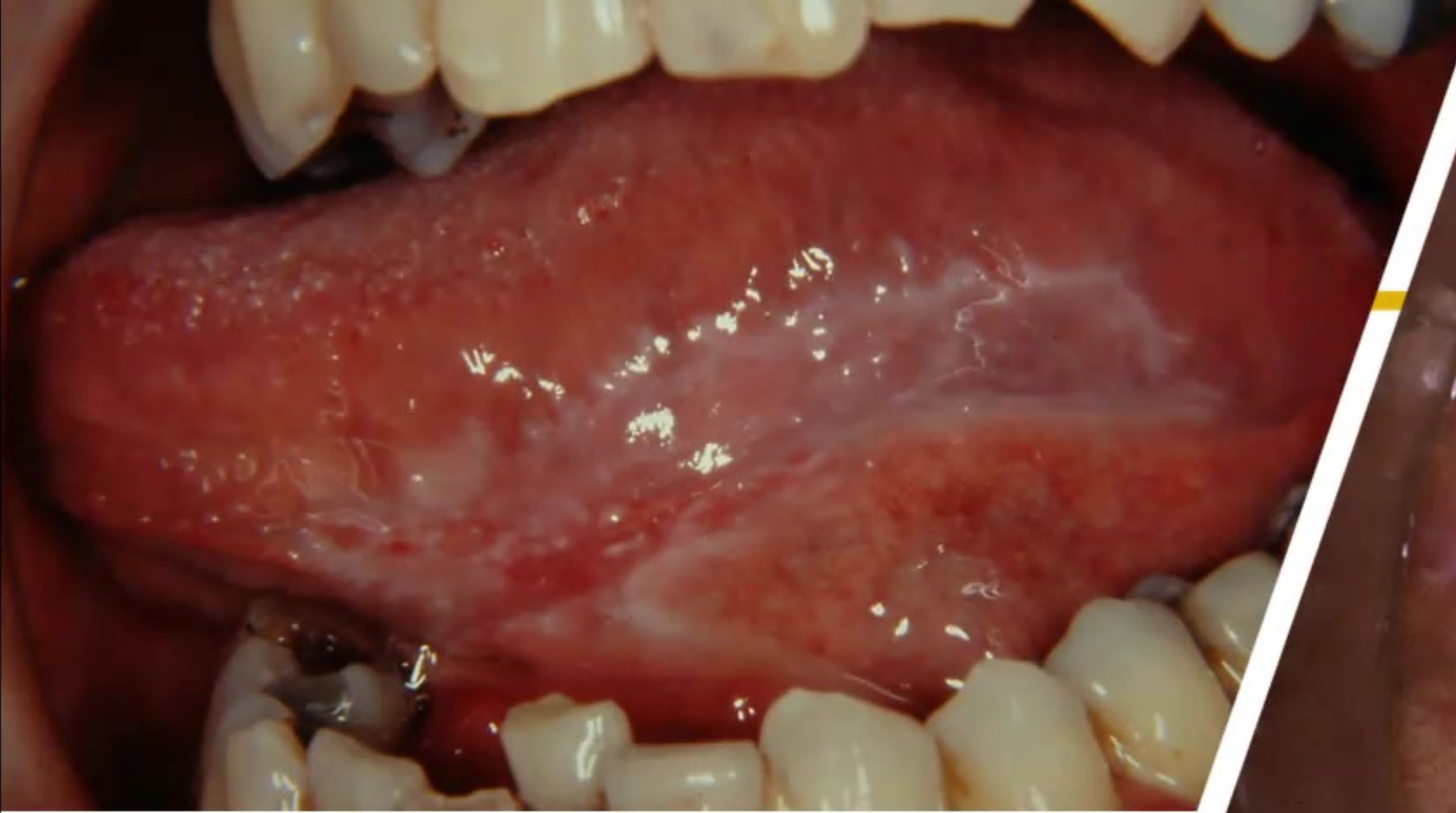
Number of cancer deaths in 2035 (all ages)



# Age grouping

## Oral and Oropharyngeal Cancer





## Nomenclature and classification

- **Definition**
- OPMDs refer to a group of lesions and conditions characterised by a variably increased risk of developing cancers of the lip (C00) and the oral cavity (C02-C06)
- ‘pre-cancer’, ‘precursor lesions’, ‘pre-malignant’, ‘intra epithelial neoplasia’ and ‘potentially malignant’ have been used in the international literature to broadly describe clinical presentations that may potentially become cancer.

O