



Oral Pathology

Oral Pathology

- Developmental Conditions
- **Mucosal Lesions—Reactive**
- Mucosal Lesions—Infections
- Mucosal Lesions—Immunologic Diseases
- Mucosal Lesions—Premalignant
- Mucosal Lesions—Malignant
- CT Tumors—Benign
- CT Tumors—Malignant
- Salivary Gland Diseases—Reactive
- Salivary Gland Diseases—Benign
- Salivary Gland Diseases—Malignant
- Lymphoid Neoplasms
- Odontogenic Cysts
- Odontogenic Tumors
- Bone Lesions—Fibro-Osseous
- Bone Lesions—Giant Cell
- Bone Lesions—Inflammatory
- Bone Lesions—Malignant
- Hereditary Conditions

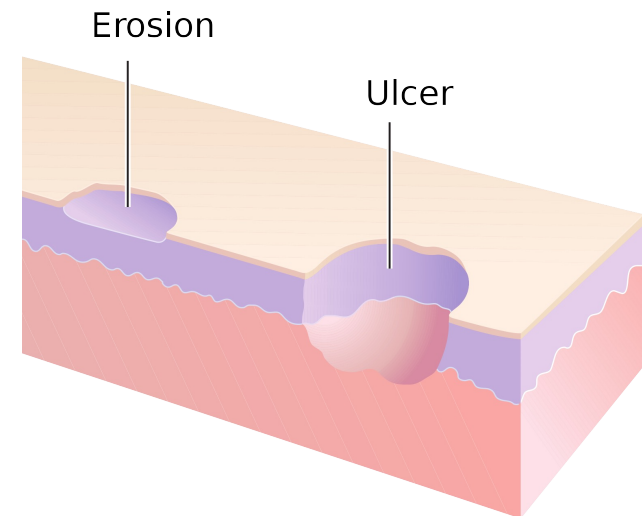
Linea Alba

- White line in buccal mucosa
- Type of focal hyperkeratosis due to chronic friction on mucosa



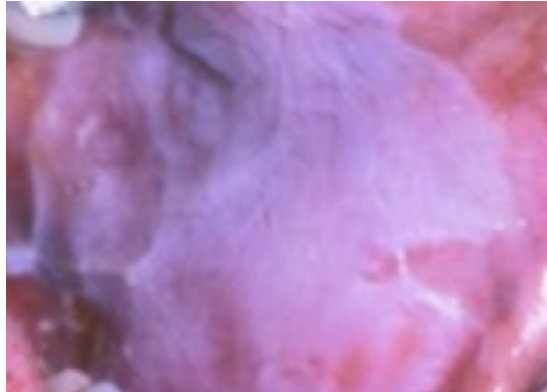
Traumatic Ulcer

- Very common
- Erosion= incomplete break
- Ulcer= complete break through epithelium



Chemical Burn

- Aspirin, hydrogen peroxide, silver nitrate, phenol



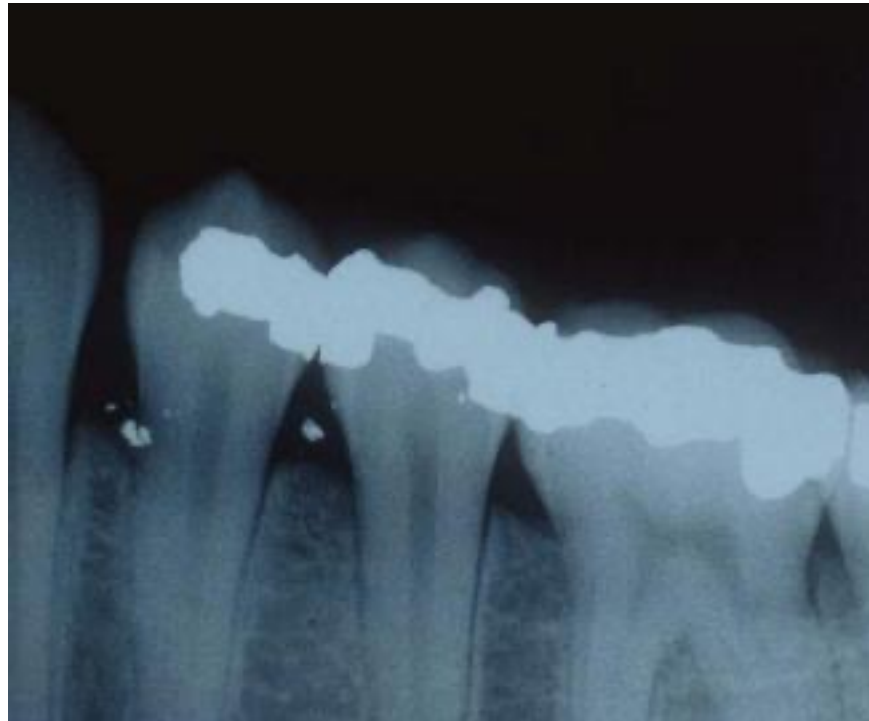
Nicotine Stomatitis

- Red dots are inflamed salivary duct openings
- Only premalignant if related to “reverse smoking” (lighted end in mouth)



Amalgam Tattoo

- Traumatic implantation of amalgam particles into mucosa
- Tiny radiopaque particles in x-ray



Smoking-Associated Melanosis

- Chemicals in tobacco stimulate melanocytes
- Brown, diffuse, irregular macules
- Typically seen in anterior gingiva
- Tx: reversible if smoking discontinued



Melanotic Macule

- Benign hyperpigmentation in mucous membrane
- Basically, a freckle of mucosa
- **Peutz-Jeghers Syndrome**= freckles + intestinal polyps

Hairy Tongue

- Elongated filiform papillae



Dentifrice-Associated Sloughing

- Related to surfactant ingredient sodium lauryl sulfate
- Suggest Toms of Maine or Rembrandt toothpaste



Submucosal Hemorrhage

- All of these are extravascular lesions that do not blanch
- In contrast, vascular lesions like hemangiomas and telangiectasias do blanch on a diascopy test
- Petechiae= 1mm hemorrhages (Valsalva maneuver, violent cough, fellatio)
- Purpura= slightly larger than petechiae
- Ecchymosis= 1cm or bigger bruise
- Hematoma= mass of blood within tissue, caused by trauma to oral mucosa like an anesthetic needle
- Tx: none, eliminate cause if possible

