



Oral Pathology

Oral Pathology

- Developmental Conditions
- Mucosal Lesions—Reactive
- **Mucosal Lesions—Infections**
- Mucosal Lesions—Immunologic Diseases
- Mucosal Lesions—Premalignant
- Mucosal Lesions—Malignant
- CT Tumors—Benign
- CT Tumors—Malignant
- Salivary Gland Diseases—Reactive
- Salivary Gland Diseases—Benign
- Salivary Gland Diseases—Malignant
- Lymphoid Neoplasms
- Odontogenic Cysts
- Odontogenic Tumors
- Bone Lesions—Fibro-Osseous
- Bone Lesions—Giant Cell
- Bone Lesions—Inflammatory
- Bone Lesions—Malignant
- Hereditary Conditions

Herpes Simplex Virus (HSV)

- **Primary** → pan-oral, self-limiting and childhood
- Tx: palliative
- Latent in trigeminal ganglion
- **Recurrent** → keratinized
 - **Herpes labialis** (cold sore, fever blister) → vermilion border
 - **Recurrent intraoral herpes** → attached gingiva, hard palate
 - Reactivation is triggered by stress, sunlight, or immunosuppression
- Herpetic whitlow → finger, dentist should not contact patients until it resolves
- Herpes gladiatorum → head
- Tx: acyclovir in prodromal period



Varicella Zoster Virus (VZV)

- **Primary** → varicella aka chickenpox, self-limiting and childhood
- Latent in trigeminal ganglion
- **Recurrent** → herpes zoster aka shingles
- **Ramsay Hunt Syndrome**= herpes zoster reactivation in geniculate ganglion affecting cranial nerves VII and VIII resulting in facial paralysis, vertigo, deafness
- Tx: acyclovir



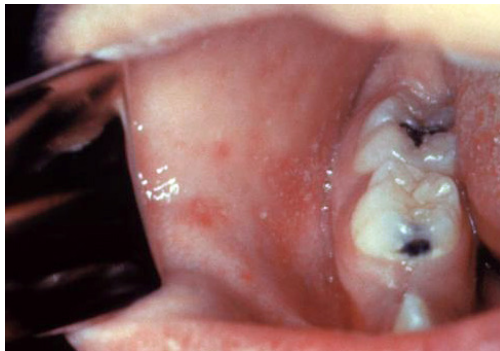
Coxsackie Virus

- Hand-foot-and-mouth disease
- Herpangina → posterior oral cavity (soft palate, throat, and tonsils)



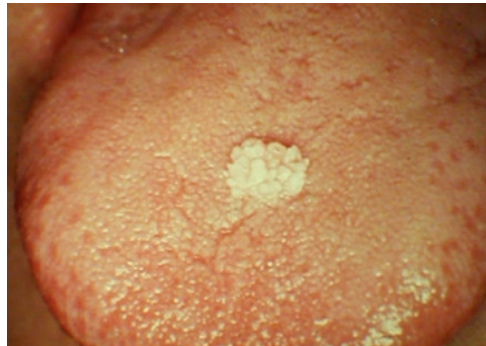
Measles (Rubeola)

- Koplik's spots (buccal mucosa dot ulcers) precede skin rash
- Primary → self-limiting and childhood



Papilloma (Wart)

- Caused by several strains of HPV
- Benign epithelial pedunculated or sessile proliferation on skin or mucosa

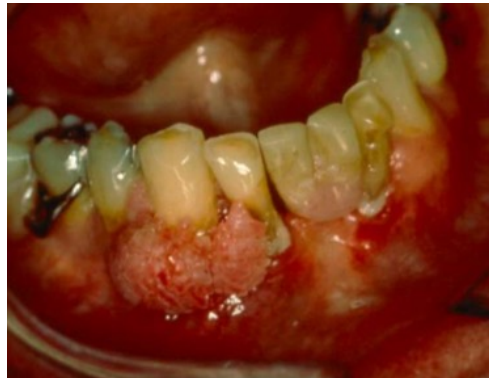


Verruca Vulgaris

- Caused by several strains of HPV
- Common skin wart

Condyloma Acuminatum

- Caused by **HPV 6 and 11**
- Genital wart, or from oral sex with someone with genital warts
- Tx: excision with high recurrence



Focal Epithelial Hyperplasia (Heck's Disease)

- Caused by **HPV 13 and 32**
- Multiple small dome-shaped warts on oral mucosa
- Tx: excision with excellent prognosis



Oral Hairy Leukoplakia

- Caused by EBV
- White patch on lateral tongue that does not wipe off
- Opportunistic infection associated with HIV
- Associated with Burkitt's lymphoma



Syphilis

- Caused by contact with **Treponema pallidum** (spirochete)
- **Primary lesion** → chancre
- **Secondary lesion** → oral mucous patch, condyloma latum, maculopapular rash
- **Tertiary lesion** → gumma, CNS involvement, CV involvement
- **Congenital Syphilis**= Hutchinson's triad (notched incisors and mulberry molars, deafness, ocular keratitis)



Tuberculosis

- Caused by inhalation of **Mycobacterium tuberculosis**
- Oral nonhealing chronic ulcers follow lung infection
- **Primary** → Ghon complex (inhaled bacteria surrounded in a granuloma that undergoes caseating necrosis + infected hilar lymph node draining the first lesion)
- Hilum= root of the lung
- **Secondary** → more widespread lung infection with cavitation
- **Miliary** → systemic spread
- HIV patients are at high risk of getting progressive disease
- Tx: multidrug therapy (isoniazid, rifampin, ethambutol)



Gonorrhoea

- Caused by *Neisseria gonorrhoeae*
- Oral pharyngitis rarely seen

Actinomycosis

- Caused by *Actinomyces israelii* (filamentous)—NOT FUNGAL
- Opportunistic infection, chronic and granulomatous
- **Periapical** → jaw infections
- **Cervicofacial** → head and neck infections
- **Sulfur granules** in purulent exudate
- Tx: long-term high-dose penicillin



Scarlet Fever

- Caused by Group A strep (*Streptococcus pyogenes*)
- This is when strep throat becomes a systemic infection
- **Strawberry tongue**= white-coated tongue with red inflamed fungiform papillae
- Tx: penicillin



Candidiasis

- Also known as thrush
- Pseudomembranous → white plaque that rubs off
- Atrophic → red
- Median rhomboid glossitis → loss of lingual papillae
- Angular cheilitis → corner of mouth
- Tx: antifungal (azole or statin)



Deep Fungal Infections

- Blastomycosis → US Northeast, spores
- Coccidioidomycosis → US Southwest, valley fever
- Cryptococcosis → US West
- Histoplasmosis → US Midwest