



# Oral Pathology

# Oral Pathology

- Developmental Conditions
- Mucosal Lesions—Reactive
- Mucosal Lesions—Infections
- Mucosal Lesions—Immunologic Diseases
- Mucosal Lesions—Premalignant
- Mucosal Lesions—Malignant
- **CT Tumors—Benign**
- CT Tumors—Malignant
- Salivary Gland Diseases—Reactive
- Salivary Gland Diseases—Benign
- Salivary Gland Diseases—Malignant
- Lymphoid Neoplasms
- Odontogenic Cysts
- Odontogenic Tumors
- Bone Lesions—Fibro-Osseous
- Bone Lesions—Giant Cell
- Bone Lesions—Inflammatory
- Bone Lesions—Malignant
- Hereditary Conditions

# Fibroma

- Also called *traumatic fibroma*, *irritation fibroma*, and *hyperplastic scar*
- Caused by chronic trauma or irritation
- Fibrous hyperplasia of oral mucosa



# Gingival Hyperplasia

- Calcium channel blockers
- Dilantin= anticonvulsant
- Cyclosporine= immunosuppressant
- Tx: gingivectomy and discontinue drug if possible



CDC is concerned about gingival hyperplasia

# Denture-Induced Fibrous Hyperplasia

- Epulis fissuratum= vestibule
- Papillary hyperplasia= palate



# Traumatic Neuroma

- Entangled submucosal mass of neural tissue and scar
- Caused by injury to nerve
- Most common at mental foramen
- **Multiple Endocrine Neoplasia (MEN 2B)**= multiple neuromas + medullary thyroid cancer + pheochromocytoma of the adrenal gland



# Pyogenic Granuloma

- Hyperplasia of **capillaries**= RED
- Caused by chronic trauma or irritation
- Common in gingiva



# Nodular Fasciitis

- Neoplasm of **fibroblasts**
- Easy to eradicate and rarely recurs
- Tx: surgical excision



# Fibromatosis

- Neoplasm of **fibroblasts**
- Difficult to eradicate and often recurs



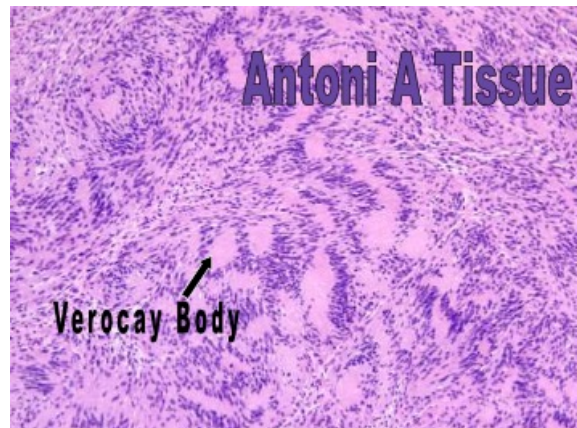
# Granular Cell Tumor

- Neoplasm of **Schwann cells**
- Named such because these tumor cells have a granular cytoplasm
- Pseudoepitheliomatous hyperplasia (PEH) in this tumor mimics SCC
- Most common on dorsal tongue
- Variant on gingiva is congenital epulis of newborn (no PEH)



# Schwannoma (Neurilemmoma)

- Neoplasm of **Schwann cells**
- Acellular Verocay bodies in Antoni A tissue (line of scrimmage)



# Neurofibroma

- Neoplasm of **Schwann cells** and **fibroblasts**
- **Neurofibromatosis type I/Von Recklinghausen's disease** = multiple neurofibromas + multiple skin freckles (café au lait spots) + axillary freckles (Crowe's sign) + iris freckles (Lisch spots); neurofibromas can transform to neurofibrosarcomas here



# Benign CT Tumors

## Leiomyoma

- Neoplasm of **smooth muscle cells**

## Rhabdomyoma

- Neoplasm of **skeletal muscle cells**

## Lipoma

- Neoplasm of **fat cells**
- Most common on buccal mucosa

