



Oral Pathology

Oral Pathology

- Developmental Conditions
- Mucosal Lesions—Reactive
- Mucosal Lesions—Infections
- Mucosal Lesions—Immunologic Diseases
- Mucosal Lesions—Premalignant
- Mucosal Lesions—Malignant
- CT Tumors—Benign
- CT Tumors—Malignant
- Salivary Gland Diseases—Reactive
- Salivary Gland Diseases—Benign
- Salivary Gland Diseases—Malignant
- **Lymphoid Neoplasms**
- Odontogenic Cysts
- Odontogenic Tumors
- Bone Lesions—Fibro-Osseous
- Bone Lesions—Giant Cell
- Bone Lesions—Inflammatory
- Bone Lesions—Malignant
- Hereditary Conditions

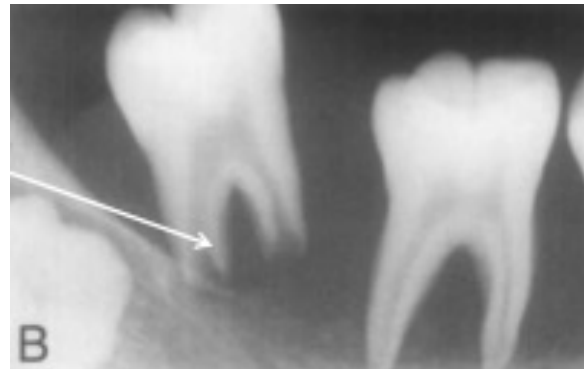
Hodgkin's Lymphoma

- Reed-Sternberg cells= malignant **B cells**
- Very rare in the oral cavity
- Tx: chemo/radio



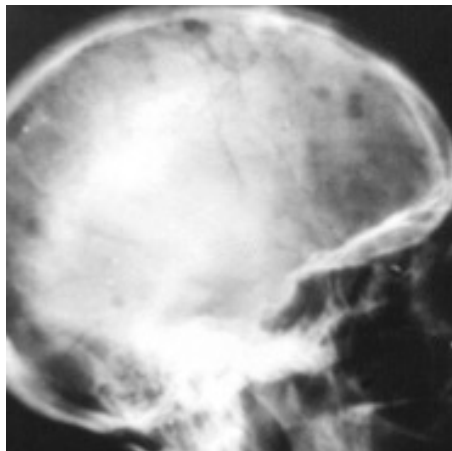
Non-Hodgkin's Lymphoma (NHL)

- Neoplasm of **B or T cells**
- **Burkitt's Lymphoma**= type of **B cell** NHL with bone marrow involvement, swelling, pain, tooth mobility, lip paresthesia, and halts root development
- Tx: chemo/radio



Multiple Myeloma

- Also called *plasma cell myeloma* because it involves neoplasm of antibody-secreting B cells aka **plasma cells**
- Multiple punched out radiolucencies usually in skull
- Amyloidosis due to accumulation of complex amyloid proteins that develop from antibody light chains
- Tx: chemotherapy, poor prognosis



Leukemia

- Neoplasm of **bone marrow cells** (lymphocytes, NK cells, granulocytes, and megakaryocytes)
- Classification based on cell lineage (myeloid or lymphoid) and whether the disease is acute or chronic
 - ALL > CML > AML > CLL
- Three clinical signs are bleeding (platelets), fatigue (RBCs), and infection (WBCs)

ALL Children Are ChiLL