



Oral Pathology

Oral Pathology

- Developmental Conditions
- Mucosal Lesions—Reactive
- Mucosal Lesions—Infections
- Mucosal Lesions—Immunologic Diseases
- Mucosal Lesions—Premalignant
- Mucosal Lesions—Malignant
- CT Tumors—Benign
- CT Tumors—Malignant
- Salivary Gland Diseases—Reactive
- Salivary Gland Diseases—Benign
- Salivary Gland Diseases—Malignant
- Lymphoid Neoplasms
- Odontogenic Cysts
- **Odontogenic Tumors**
- Bone Lesions—Fibro-Osseous
- Bone Lesions—Giant Cell
- Bone Lesions—Inflammatory
- Bone Lesions—Malignant
- Hereditary Conditions

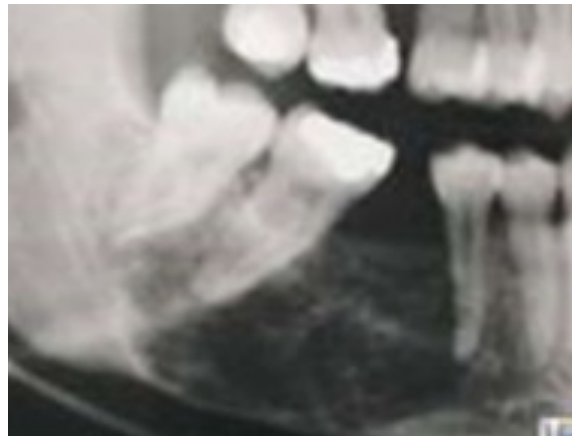
Ameloblastoma

- Benign but aggressive
- Classic differential diagnosis for multilocular radiolucency in posterior mandible is ameloblastoma, KCOT, CGCG, COF
- Tx: wide excision or resection, high recurrence if too conservative



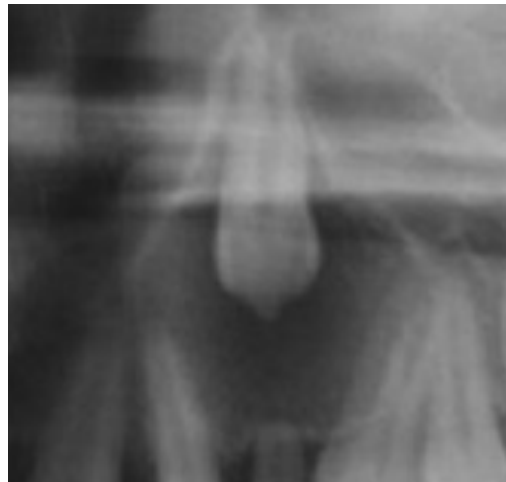
Calcifying Epithelial Odontogenic Tumor (CEOT)

- Also called *Pindborg tumor*
- Radiolucency with driven snow calcifications (white flecks)
- Amorphous pink amyloid with concentric calcifications termed Liesegang rings
- Tx: surgical excision, good prognosis



Adenomatoid Odontogenic Tumor (AOT)

- Contains epithelial duct-like spaces (adeno=gland) and enameloid material
- Mostly in anterior maxilla and over impacted canine
- Tx: surgical excision, good prognosis



Odontogenic Myxoma

- Also called *myxofibroma*
- Myxomatous connective tissue (pulp-like material with little collagen)= **slimy stroma**
- Messy radiolucency with unclear borders and honeycomb pattern
- Tx: surgical excision, moderate recurrence



Central Odontogenic Fibroma (COF)

- Dense collagen with strands of epithelium
- **Central**= bone, well-defined multilocular radiolucency
- **Peripheral**= gum



Cementoblastoma

- Well-circumscribed radiopaque mass
- Ball of cementum and cementoblasts replacing tooth root
- Tx: surgical excision and extraction



Ameloblastic Fibroma

- Occurs in children and teens
- Most common in posterior mandible
- Myxomatous connective tissue
- Called an ameloblastic fibro-odontoma if there is an odontoma present as well
- Tx: surgical excision



Odontoma

- Opaque lesion composed of dental hard tissues
- Can block eruption
- Compound= mostly anterior, bunch of miniature teeth
- Complex= mostly posterior, conglomerate mass
- **Gardner Syndrome**= multiple odontomas + intestinal polyps

