



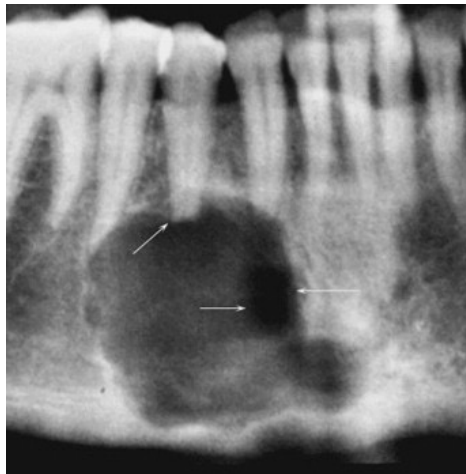
Oral Pathology

Oral Pathology

- Developmental Conditions
- Mucosal Lesions—Reactive
- Mucosal Lesions—Infections
- Mucosal Lesions—Immunologic Diseases
- Mucosal Lesions—Premalignant
- Mucosal Lesions—Malignant
- CT Tumors—Benign
- CT Tumors—Malignant
- Salivary Gland Diseases—Reactive
- Salivary Gland Diseases—Benign
- Salivary Gland Diseases—Malignant
- Lymphoid Neoplasms
- Odontogenic Cysts
- Odontogenic Tumors
- Bone Lesions—Fibro-Osseous
- **Bone Lesions—Giant Cell**
- Bone Lesions—Inflammatory
- Bone Lesions—Malignant
- Hereditary Conditions

Central Giant Cell Granuloma

- Composed of fibroblasts and multinucleated giant cells
- Anterior mandible favored
- **Central (CGCG)**= bone, radiolucency with thin wispy septations
- **Peripheral**= gum, red-purple gingival mass
- Tx: excision



Aneurysmal Bone Cyst

- Pseudocyst composed of blood-filled spaces
- Multilocular radiolucency
- Expansile
- Posterior mandible favored
- Tx: excision



Hyperparathyroidism

- Causes multiple bone lesions (look like CGCGs) resulting from excessive levels of parathyroid hormone
- Brown tumor= due to excess osteoclast activity
- **Elevated alkaline phosphatase** due to too much breakdown of bone
- **Von Recklinghausen's disease of bone**= the result of this condition (not to be confused with von Recklinghausen's disease aka neurofibromatosis)



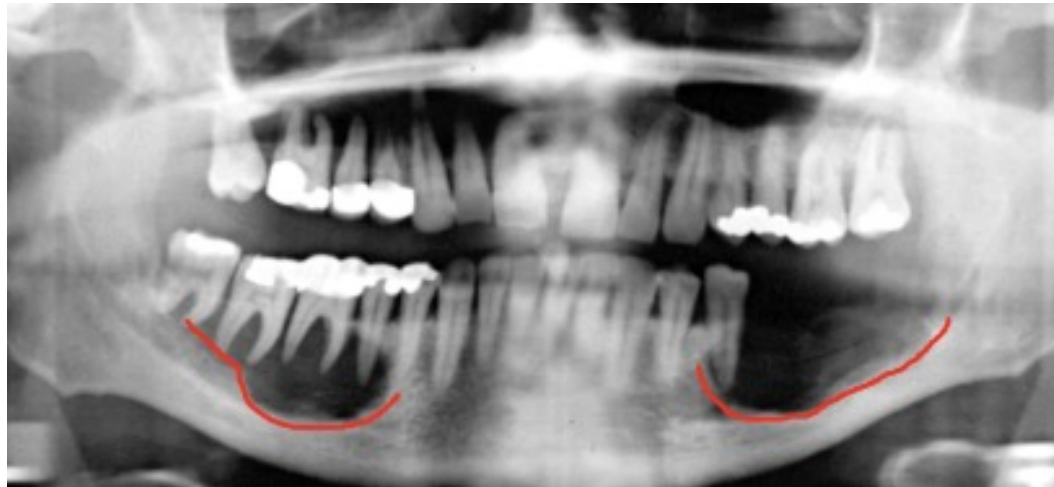
Cherubism

- Autosomal dominant
- Symmetrical bilateral swelling, expansile bilateral multilocular radiolucencies
- Stops growing after puberty



Langerhans Cell Disease

- Also called idiopathic histiocytosis
- Rare type of cancer
- Langerhan cells or histiocytes are normally found in the skin as antigen presenting cells, but can cause damage if they build up in certain parts of the body
- Discrete punched out “ice cream scoop” radiolucencies that lead to floating teeth
- Tx: excision, radiation and chemo



Paget's Disease

- Progressive metabolic disturbance of many bones (spine, femur, skull, jaws) causing symmetrical enlargement
- Usually adults older than 50
- **Elevated alkaline phosphatase** due to breakdown of bone
- Cotton wool appearance
- Dentures (and hats) become too tight
- Tx: bisphosphonates, calcitonin

